




Version 5.53

## UPGRADE INSTALLATION PROCEDURES

SIS-TECH Applications is proud to provide you with the new SIL Solver® Version 5.53! You will be sent an email from svogtmann@sis-tech.com titled 'Files have been shared with you.' This is a link to the 'Installation CD.zip' file on our secure file sharing site.

There are two different instruction sets below, SET 1 for users with custom device data sheets and SET 2 for users that have not added any custom device data sheets. It is important to follow both the correct set of instructions and the order of the steps.

### SET 1: Installation for users with Custom Device Data Sheets

 Warning: This set is for users with custom device data sheets

1. The upgrade involves an executable file. If you do not have ADMIN rights to your computer consult with your IT department
2. Close all applications including SIL Solver®.
3. To maintain custom device data sheets, you **must** copy your SIL\_Data folder to a different location on the hard drive **prior** to new installation. The SIL\_Data folder is located in Program Files/SilSolver folder. Copy the SIL\_Data folder to your Desktop.
4. The previous version of SIL Solver® installed on the computer must be uninstalled before the installation of version 5.53. Use Windows Add/Remove Programs. Uninstalling your previous version will not affect your project files. It will delete your SIL Solver® database.
5. After uninstall is complete click on the link in the Egnyte email. If given an option **Save** this file to an approved trusted location. If the download starts automatically check your My Documents/Downloads. Antivirus/antispysware programs may quarantine the SIL Solver execution file. If this occurs, restore the files from quarantine.
6. When the download finishes you may receive the option dialog box. Choose open. If no option box pops up then extract the zip file to the same location as the download.



Note: The 'Installation CD' folder also contains the manual for SIL Solver®. This manual will be automatically installed on your hard drive. There is a more detailed walk through in the manual for those needing a more custom installation beginning on page 119.

7. For the standard installation double click the 'Setup.exe' file in the 'Installation CD' folder to install SIL Solver® Version 5.53. Follow the on screen instructions.
8. Once the installation is complete custom device data sheets must be merged into the new version.
9. Double click the **SILSolver\_Merge\_Extract.exe** file in the 'Installation CD' folder.

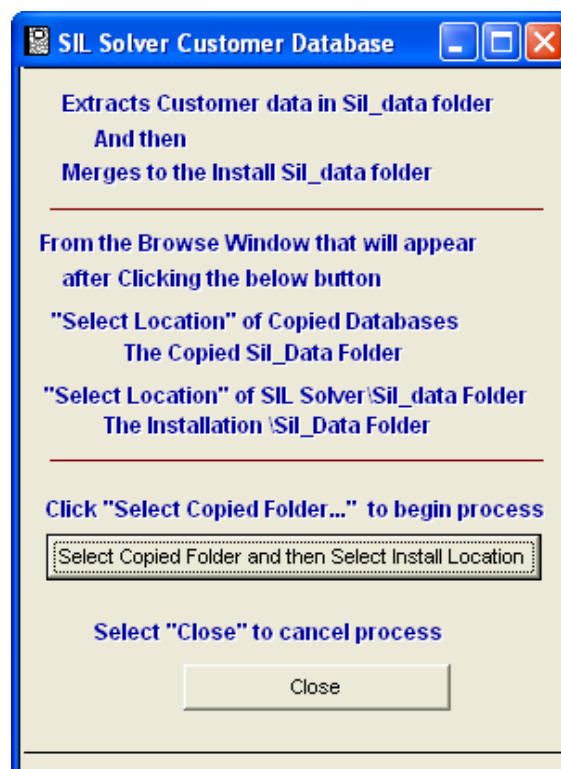



Figure 1 Extract and Merge Customer Database

10. Select your old SIL\_Data that you copied into your Desktop. The default location of the second file is automatically selected. If you changed the installation location you will have to select the new location.

11. On completion of the merge the old SIL\_Data database folders will be renamed to their original names plus the letters "old" at the end.

## SET 2: Installation for users without Custom Device Data Sheets

 Warning: This set is for users without custom device data sheets

1. The upgrade involves an executable file. If you do not have ADMIN rights to your computer consult with your IT department.
2. Close all applications including SIL Solver®.
3. The previous version of SIL Solver® installed on the computer must be uninstalled before installing version 5.53. Use Windows Add/Remove Programs. Uninstalling your previous version will not affect your project files. It will delete your SIL Solver® database.
4. After uninstal is complete click on the link in the Egnyte email. If given an option **Save** this file to an approved trusted location. If the download starts automatically check your My Documents/Downloads. Antivirus/antispysware programs may quarantine the SIL Solver execution file. If this occurs, restore the files from quarantine.
5. When the download finishes you may receive an option dialog box. Choose open. If no option box pops up then extract the zip file to the same location as the download.

Note: The 'Installation CD' folder also contains the manual for SIL Solver®. This manual will be automatically installed on your hard drive. There is a more detailed walk through in the manual for those needing a more custom installation beginning on page 119.

6. For the standard installation double click the 'Setup.exe' file in the 'Installation CD' folder to install SIL Solver® Version 5.53. Follow the on screen instructions.